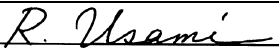




SERVICE BULLETIN

QUALITY INFORMATION ANALYSIS
OVERSEAS SERVICE DEPT. MITSUBISHI MOTORS CORPORATION

SERVICE BULLETIN		No.: MSB-97E32-001	
		Date: 1997-11-24	<Model> ALL MODELS <M/Y> 97-10
Subject: DELETION OF ENGINE MOUNT DYNAMIC DAMPER			
Group: POWER PLAN MOUNT	Draftno: 97-JY-019		
INFORMATION	OVERSEAS SERVICE DEPT	 R. USAMI - MANAGER QUALITY INFORMATION ANALYSIS	

1. Description:

The engine mount dynamic dampers for the 4G6 and 4D6 engines have been deleted. Accordingly, the portion of the engine mount bracket where the dynamic damper is installed has had its tapping eliminated.
On the 6A1 engine, the dynamic dampers are provided as before.

2. Effective Date:

From May 21, 1997

3. Interchangeability:

New parts can be installed on the old car.

4. Applicable Manuals:

Manual	Pub. No.	Language	Page(s)
'97 GALANT Technical information manual	PWDE9604	(English)	1-26
'97 GALANT Workshop manual chassis	PWDE9611	(English)	32-4
	PWDS9612	(Spanish)	
	PWDF9613	(French)	
	PWDG9614	(German)	
	PWDD9615	(Dutch)	
	PWDW9616	(Swedish)	

5. Details:

'97 GALANT Technical information manual, Page 2
'97 GALANT Workshop manual chassis, Page 3

MOUNT

The mount is of the proven inertial axis supporting type.

Supporting the engine and transmission block at the front top of the engine and at the rear top of

the transmission, the inertial axis supporting system effectively suppresses the engine vibration.

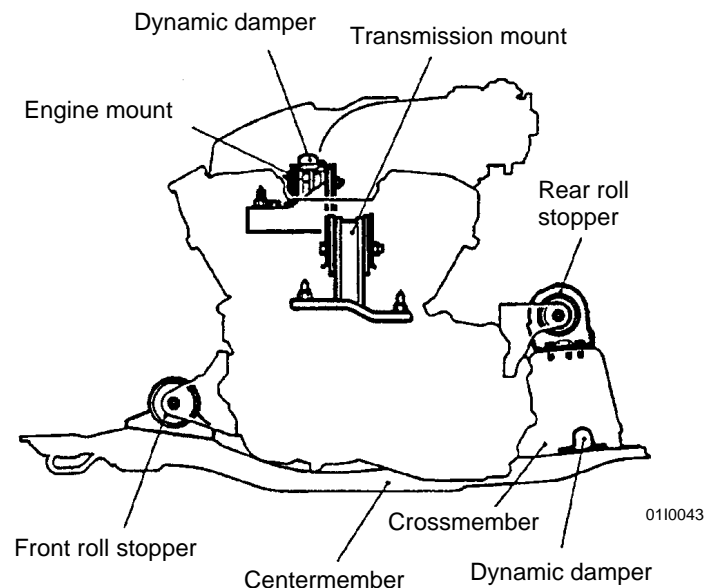
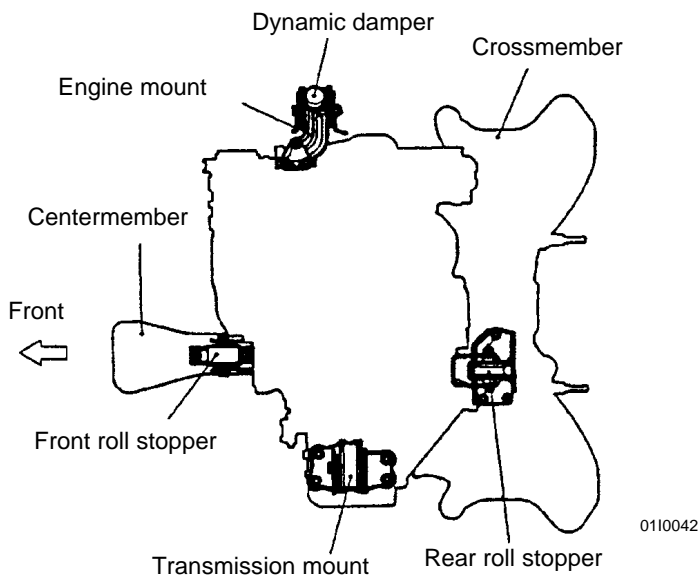
FEATURES

- The mount elements are arranged near the roll axes of the engine and transmission so that the rolling moment can be limited and vibrations can be reduced during idling.
- The front and rear roll stopper brackets have been located to the transmission housing. As a result, the bracket has been made shorter and more rigid, which contributes to less vibration and noise.
- Both engine and transmission mounts use aluminium casting brackets. In addition to lightness and high rigidity, these brackets features vibration and noise reducing characteristics.

<6A1> <Added>

- Each insulator with internal hollows has outstanding vibration absorbing characteristics.
- Each engine mount incorporates a fluid-filled insulator which contributes to quiet and comfort driving.
- Dynamic dampers provided in the engine mounts effectively reduce vibration and noise.
- The transmission mounts also incorporate fluid-filled insulators for quiet and comfortable driving effects.
- The center member is provided with a dynamic damper which absorbs part of vibrations thus reducing noise. <4G6, 4D6>

CONSTRUCTION DIAGRAM

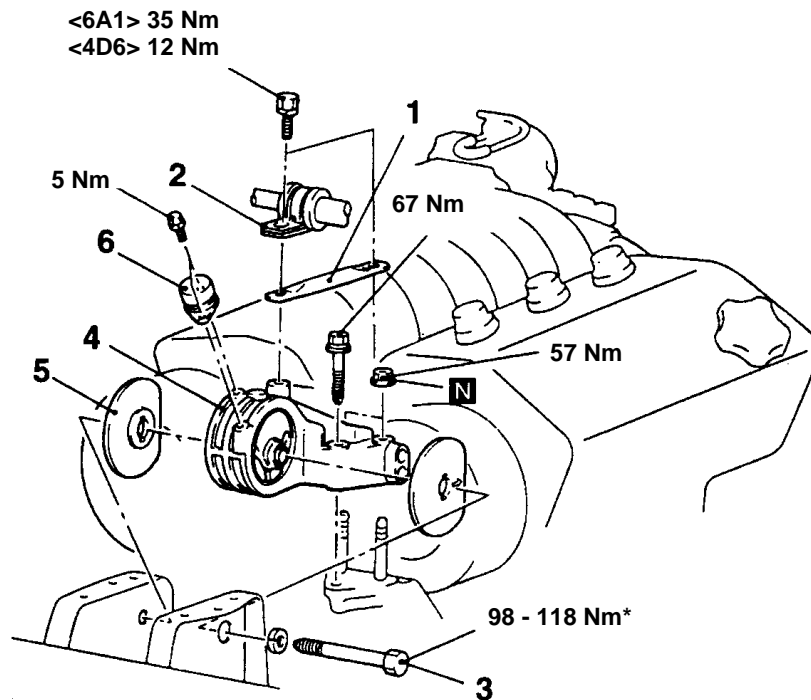


ENGINE MOUNTING

REMOVAL AND INSTALLATION

Pre-removal and Post-installation Operation

- Jack Up the Engine and Transmission Assembly Until There is no Weight on the Engine Mount Insulator
- Reserve Tank Removal and Installation (Refer to GROUP 14)
- Engine Cover Removal and Installation <6A1>



A0110073

Removal steps

1. Engine mount stay <6A1>
2. Power steering hose bracket <4D6>
3. Engine mount insulator mounting bolt
4. Engine mount bracket
5. Engine mount stopper
6. Dynamic damper

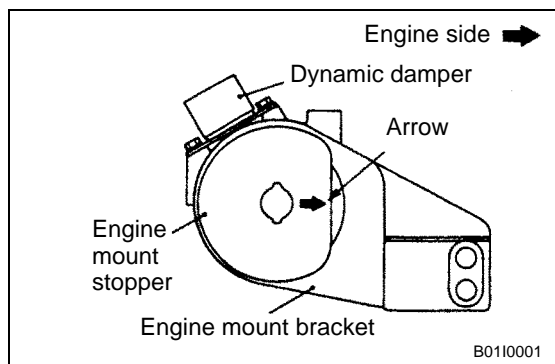
▶ A ◀

<6A1>

<Added>

Caution

Mounting locations marked by * should be provisionally tightened, and then fully tightened after placing the vehicle horizontally and loading the full weight of the engine on the vehicle body



B0110001

INSTALLATION SERVICE POINT

▶ A ◀ ENGINE MOUNT STOPPER INSTALLATION

Clamp the engine mount stopper so that the arrow points in the direction as shown in the diagram